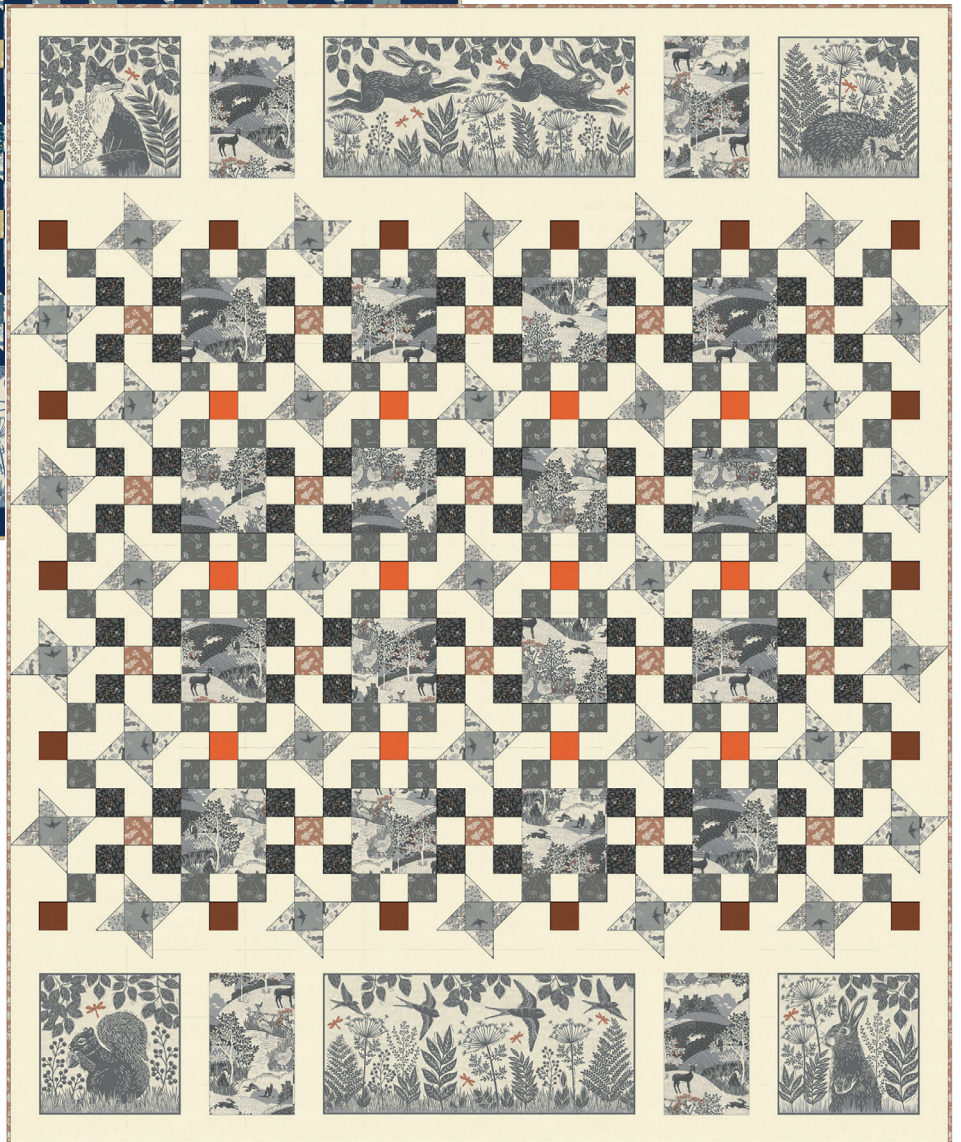
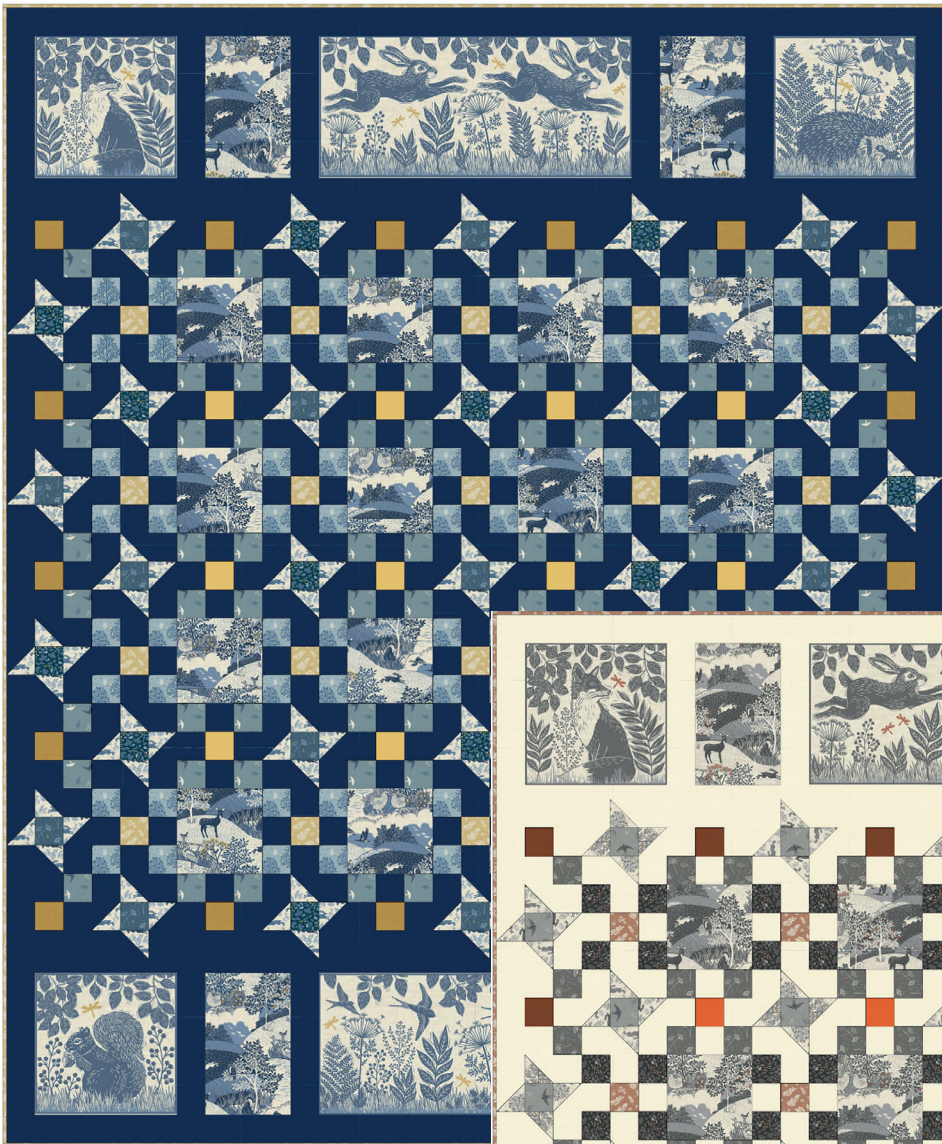


Hedgerow Quilt

Designed by Lynne Goldsworthy of @lilysquilts
66" x 80" (1.65m x 2m)



[makower uk](http://makoweruk.com)

Unit 14, Cordwallis Business Park, Clivemont Road, Maidenhead, Berkshire SL6 7BU
+44(0)1628 509640 sales@makoweruk.com www.makoweruk.com

Hedgerow Quilt

Designed by Lynne Goldsworthy of @lilysquilts
66" x 80" (1.65m x 2m)

Fabric Requirements

Grey	Blue	Amount	Cutting
1473 Q	1473 B10	3 ½ yds / 3.25m	See cutting instructions
1473 V27	1473 Y26	F8th	Three 2 ½" WOFQ strips
1473 N8	1473 Y22	F8th	Two 2 ½" WOFQ strips
2418 V*	2418 Y*	F8th	Three 2 ½" WOFQ strips
2415 S	2415 B	1 yd / 1 m	One 10 ½" WOF strip cut into four 6 ½" x 10 ½" (P**) rectangles Three 6 ½" WOF strips cut into sixteen 6 ½" squares
	2420 B	24" / 60cm	Three 6 ¼" WOF strips cut into seventeen 6 ¼" squares
2416 S		15" / 40cm	Two 6 ¼" WOF strips cut into nine 6 ¼" squares
2420 S		15" / 40cm	Two 6 ¼" WOF strips cut into eight 6 ¼" squares
	2417 B	F8th	Two 2 ½" WOFQ strips cut into sixteen 2 ½" squares
	2419 B	F8th	Three 2 ½" WOFQ strips cut into seventeen 2 ½" squares
2421 S		FQ	Five 2 ½" WOFQ strips cut into thirty-three 2 ½" squares
2419 S	2416 B	15" / 40cm	Five 2 ½" WOF strips
2417 S	2421B	15" / 40cm	Five 2 ½" WOF strips
2415 B	2415 S	5 yds / 4.5m	Two equal lengths for the backing
2418 V	2418 Y	24" / 60cm	Eight 2 ½" WOF strips for the binding
2422 S	2422 B	One panel	See cutting instructions
Wadding		74" x 88" 1.9m x 2.1m	279 Cotton Mix 80-20 from http://www.vlieseline.com/en
Thread	Aurifil 50wt for piecing and 40wt for quilting from http://www.aurifil.com		
Templates	Seventeen HST templates		

* Also used for binding

** Portrait as opposed to landscape orientation

Notes:

- Make sure to visit <http://www.makoweruk.com/projects/> to ensure you are working from the most up-to-date version of the pattern
- Panels are printed onto cotton and there is inevitably some minor degree of distortion. Always cut panels to the printed line, not the grain. Although this may involve cutting slightly wonky lines at times, the design will be pulled straight by the piecing around it. Patterns using panel pieces will also generally also include directions to add sashing and/or trim to size to accommodate the fact that there may be some size inconsistencies due to printing process.
- Read the pattern in full before starting
- ¼" seams are used throughout except where stated otherwise
- Press after each seam, pressing seams open or to one side as preferred
- BKG - background
- WOF - width of fabric - a strip of fabric cut from selvedge to selvedge
- WOFQ - width of fat quarter - a strip of fabric cut from selvedge to centre cut from a FQ
- HST – half square triangle
- Makower UK provides the written instructions only to accompany the named collection. Retailers are free to use these free instructions to provide a fabric kit. Accurate cutting of fabric is down to the individual retailer and any fabric supply enquires should be directed to point of purchase.

Cutting the fabrics

1. Cut the fabrics as shown in the main fabric requirements table.
2. Cut the background (BKG) fabric as follows:
 - Three 6 ¼" WOF strips cut into seventeen 6 ¼" squares

- Thirty-four 2 ½” strips.
 - Cut nine into one hundred and thirty-two 2 ½” squares
 - Leave four whole and cut nine into two equal lengths
 - Cut five into four 4 ½” lengths and eighteen 6 ½” lengths
 - Cut three into twelve 10 ½” lengths
 - Sew four end to end and cut into two 66 ½” lengths
- Four 1 ½” WOF strips sewn end to end and cut into two 66 ½” lengths.
- Seven 1” WOF strips cut into twelve 10 ½” lengths if needed to bring the panel pieces up to 10 ½” and 22 ½” wide in the blue version of the quilt (see cutting step 3 below).

3. Cut out the six pieces of the panel as follows.

- For the grey version, cut the squares to 10 ½” wide and the rectangles to 22 ½” wide and trim the top and bottom of each to ¼” away from the printed lines.
- For the blue version, cut to ¼” away from the printed lines. If these measure smaller than 10 ½” wide for the squares and 22 ½” wide for the rectangles, sash the sides of these pieces with 1” wide strips and trim to 10 ½” wide and 22 ½” wide respectively.
- For both grey and blue, measure the height of these pieces and trim the scenic 6 ½” x 10 ½” rectangles to the same height. Also trim the 2 ½” x 10 ½” BKG strips to the same length.

Making the quilt top

1. You will make 2” finished half square triangle (HST) units in sets of eight using paper templates. To make each set of eight HSTs, pin one BKG 6 ¼” square and one print 6 ¼” square to the back of one of the HST templates with the fabrics right sides together and the BKG fabric next to the paper. NB: the fabrics will overlap the printed lines on the template by approx. ¼” all round.
2. Shorten your machine stitch to 1.5 and sew along all of the red lines. Cut the template and fabric along all the blue lines using a rotary cutter. Trim off the corners on each triangle along the green lines.
3. Press each HST unit open. Remove paper from the back of each.
4. Discard four of the HSTs (in the case of the grey version, discard four trees (2416S) HSTs).
5. Sew the HSTs, one hundred and thirty-two of the BKG 2 ½” squares and the 2 ½” squares for the centres of the stars (grey version: 2421S and blue version: 2417B and 2419B) into nine friendship stars following the layout in figs 1-4. There are two different star designs for each colour version of the quilt.



fig 1-4

6. To make the nine patches in the centre of the quilt and the half nine patches around the borders, you will sew together the following strip sets:

- Two sets each containing two 2417S or 2421B 2 ½” WOF strips with one BKG 2 ½” WOF strip in between
- One set containing two 2417S or 2421B 2 ½” WOFQ strips with one BKG 2 ½” WOFQ strip in between. Cut the 2 ½” WOFQ strips by cutting a 2 ½” WOF strip into two equal lengths.
- Two sets each containing two 2419S or 2416B 2 ½” WOF strips with one BKG 2 ½” WOF strip in between
- One set containing two 2417S or 2421B 2 ½” WOFQ strips with one BKG 2 ½” WOFQ strip in between.
- Three sets each containing one 2418V or 2418Y 2 ½” WOFQ strip in between two BKG 2 ½” WOFQ strips.
- Two sets each containing one 1473N8 or 1473Y22 2 ½” WOFQ strip in between two BKG 2 ½” WOFQ strips.
- Three sets each containing one 1473V27 or 1473Y26 2 ½” WOFQ strip in between two BKG 2 ½” strips.

7. Trim the sets into 2 ½" wide strips as shown in fig 5.

8. See figs 6-13 for guidance and sew the resulting strips into:

- twenty (20) nine patches with one square of fabric 2418V or 2418Y in the centre, four BKG squares and four squares of fabric 2417S or 2421B.
- twelve nine patches with one square of fabric 1473N8 or 1473Y22 in the centre, four BKG squares and four squares of fabric 2419S or 2416B.
- fourteen half nine patches which sit along the top and bottom and on the left and right side of the quilt top centre with one square of 1473V27 or 1473Y26, three BKG squares and two squares of fabric 2419S or 2416B.
- To sew the four (4) four patches in the corners of the quilt top centre, you will need to open the seams on some of the remaining spare strips of three to create a four-patch with one square of 1473V27 or 1473Y26, two BKG squares and one square of fabric 2419S or 2416B.

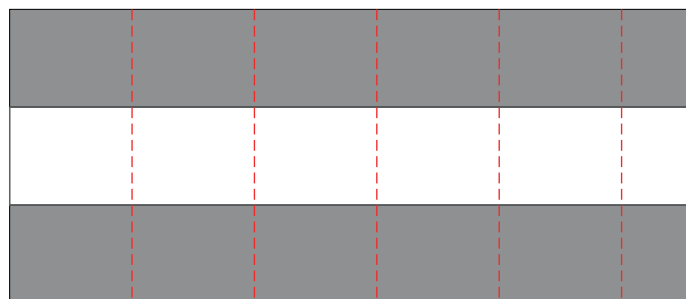


fig 5

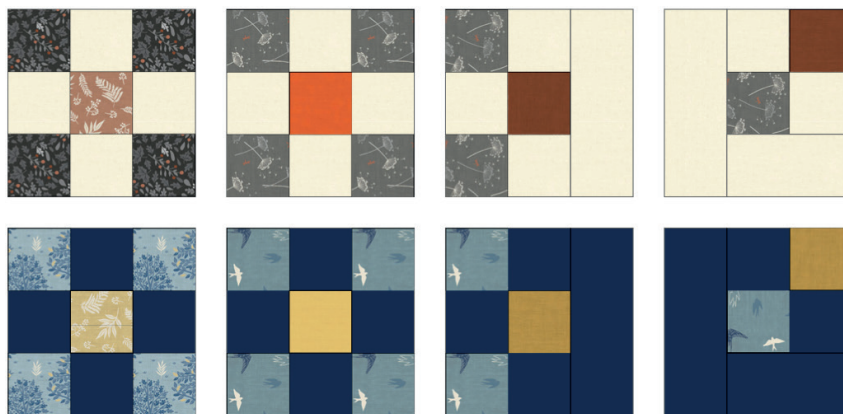


fig 6-13

9. Sew BKG 2 ½" x 6 ½" strips onto one side of the half nine patches (fig 5). Sew BKG 2 ½" x 4 ½" strips onto one side of the corner four patches and BKG 2 ½" x 6 ½" strips onto the adjacent side taking care to follow the layout in figs 9 and 13.

10. Sew the nine rows of the centre of the quilt top together following the layout in the main quilt image and with each row containing the following:

- Rows 1 and 9: Two corner four patches, four half nine patches and five stars (Follow the layout in the main quilt image so that the two different star designs alternate across the rows of the quilt).
- Rows 2, 4, 6, and 8: Two stars, five nine patches with a print fabric (2418 V and Y) centre and four Scenic fabric (2415 S and B) 6 ½" squares (taking care to orientate these squares the right way up).
- Rows 3, 5 and 7: Two half nine patches, four nine patches with a linen texture fabric (1473 N8 and Y22) centre and five stars.

11. Sew BKG 1 ½" x 66 ½" strips to the top and bottom of this piece.

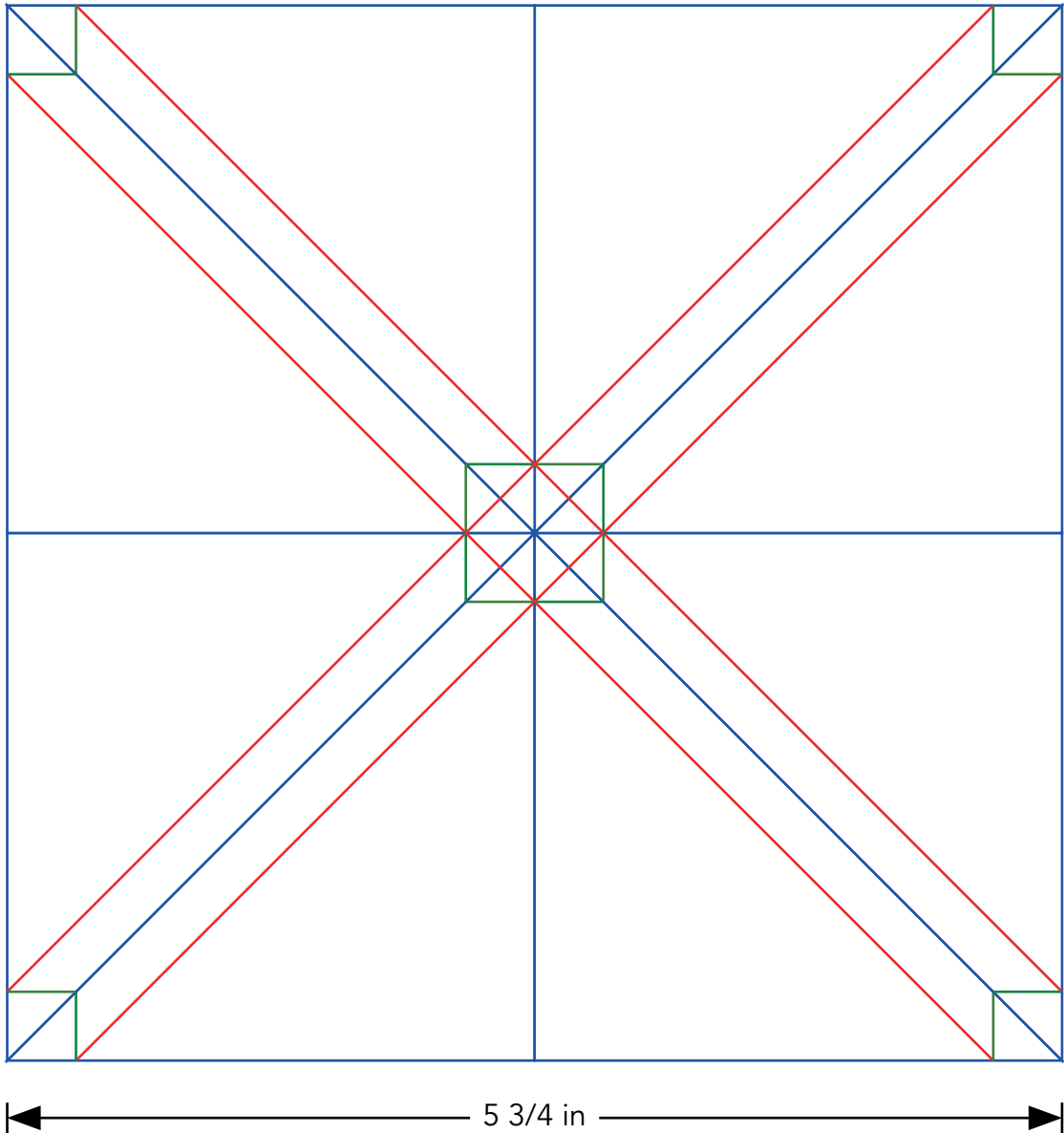
12. Sew the panel squares and rectangles and the Scenic fabric rectangles into two long strips, sashing them together with the BKG 2 ½" x 10 ½" strips (or those same strips trimmed to the height of the panel pieces), using six strips; one between each piece and one on each end.

13. Sew these two strips to the top and bottom of the quilt top centre taking care to orientate the prints the right way up.

14. Sew BKG 2 ½" x 66 ½" strips to the top and bottom of the quilt top to finish.

Finishing the quilt

1. Sew the binding strips end to end using diagonal or straight seams as preferred and press wrong sides together along the length to make a double fold binding.
2. Make a quilt sandwich, basting together the back, the wadding and the top.
3. Quilt as desired then trim square, removing excess wadding and backing. We quilted horizontal wavy lines approx 2" apart using a cream 40wt Aurifil thread on the front and back.
4. Bind, taking care to mitre the corners.



Templates must be printed at 100% or “no scaling”. To ensure the templates are the correct size, measure the guide line to make sure it has printed at the correct length.

Hedgerow

Available November.



2415/S Scenic



2415/B Scenic



2418/V Foliage



2418/Y Foliage



2421/S Swallows



2416/S Trees



2416/B Trees



2421/B Swallows



2420/S Hares



2419/S Cowslip



2419/B Cowslip



2420/B Hares



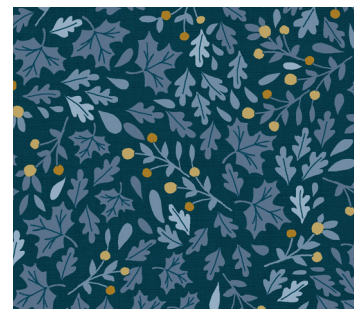
2417/S Leaves



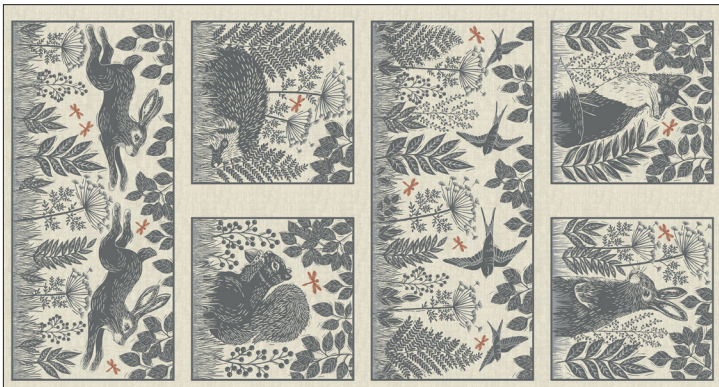
1473/V27 NEW Linen Texture



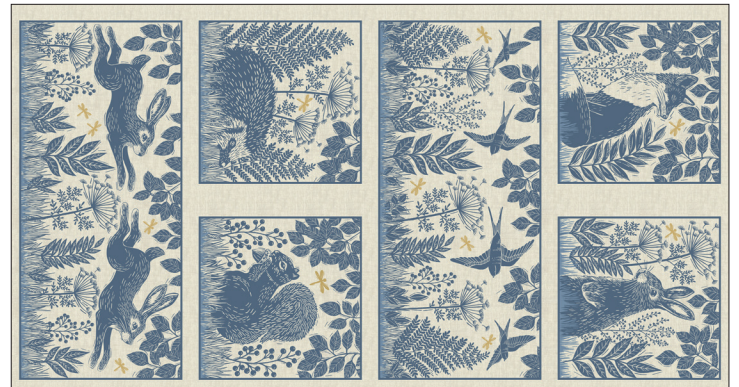
1473/Y26 NEW Linen Texture



2417/B Leaves



2422/S Panel (actual size 24" x 44" / 60 x 112cms)



2422/B Panel (actual size 24" x 44" / 60 x 112cms)