

JUNGLE

Quilt size: 42" square (107cm square)

Designed by Hilary Gooding, using the Jungle range from Makower UK



JUNGLE

Quilt size: 42" square (107cm square)

Designed by Hilary Gooding, using the Baby Jungle range of fabrics by Makower

FABRIC REQUIREMENTS

Fabrics	Amount	First Cut	2nd Cut	Position
1201/1 Scenic	70cm x 115cm	Cut two 12½" wide strips across width of fabric	Cut five 12½" squares	Background squares
1206/B Birds on Clouds	70cm x 115cm	Cut two 12½" wide strips across width of fabric	Cut four 12½" squares	Background squares
1205/X Noises	1 metre	Cut five 2" wide strips for binding	For elephants see instructions below. Cut four 2¾" squares from remnants.	Elephants, corner posts and Binding
1206/Q Birds on Clouds	Fat Eighth	Cut 4 ears from template. For appliqué instructions see below		Ears
1207/B Scatter	Fat Eighth	Cut 5 ears from template. For appliqué instructions see below		Ears
1207/R Scatter	20cm x 115cm	Cut four 1" wide strips	Cut two strips 36½" long and two strips 38½" long	Inner Border
1203 Elephants	50cm x 115cm	Fussy cut four strips of elephants each 2¾" wide *	Cut each strip 38½" long	Outer Border
1202 Animals	1.20 metres			Backing
Optional extras: Fusible web (Bondaweb) 1.30 metres, Tear-away stabilizer if satin stitching appliqué.				

*Please be aware that you need to use alternate rows of elephants as you will need to cut into the elephants either side to be able to have complete elephants in your border strip.

INSTRUCTIONS

All seam allowances are ¼" unless specified.

Appliqué

The elephants may be appliquéd using your favourite technique: fused, turned-under, by hand or machine. The templates given do not include a seam allowance so please remember to add one if you are using the turned-under method.

Fused Method:

1. Print out the template for the elephant and the ear and either trace onto template plastic or paste onto card and cut out.
2. Trace out the 9 elephants onto the paper side of the fusible leaving a small amount of space between each shape. If you would like elephants walking in different directions turn the template over. **NB** Remember that these images will be reversed when you iron them in place! This will apply to the ears as well.

3. Do not cut out the shapes before ironing the fusible web to the wrong side of the elephant fabric. Follow the manufacturer's instructions for ironing.
4. Now cut out the shapes.
5. Remove the paper backing, place in position and iron the shapes to the background blocks.
6. Satin stitch the edges using a close zigzag stitch (recommended stitch width 2.5/3 and stitch length 0.3). It is strongly recommended that you place at least one layer of stabilizer behind your shape if you are satin stitching the outline of the elephants and ears to prevent distortion and help the stitch tension.
7. Remove the stabilizer once the stitching is complete.

Turned-under Method:

1. Print out the template for the elephant and the ear and either trace onto template plastic or paste onto card and cut out.
2. Trace the outline of the elephants and the ears onto the wrong side of your fabric. Leave space between the shapes to add the seam allowances.
3. Then cut them out including your seam allowance.
4. Turn under the seam allowance, place the shapes in position on the background blocks and stitch by hand or machine.

Eyes and Tails: At this point you may want to add the eyes and tails by hand or machine embroidery.

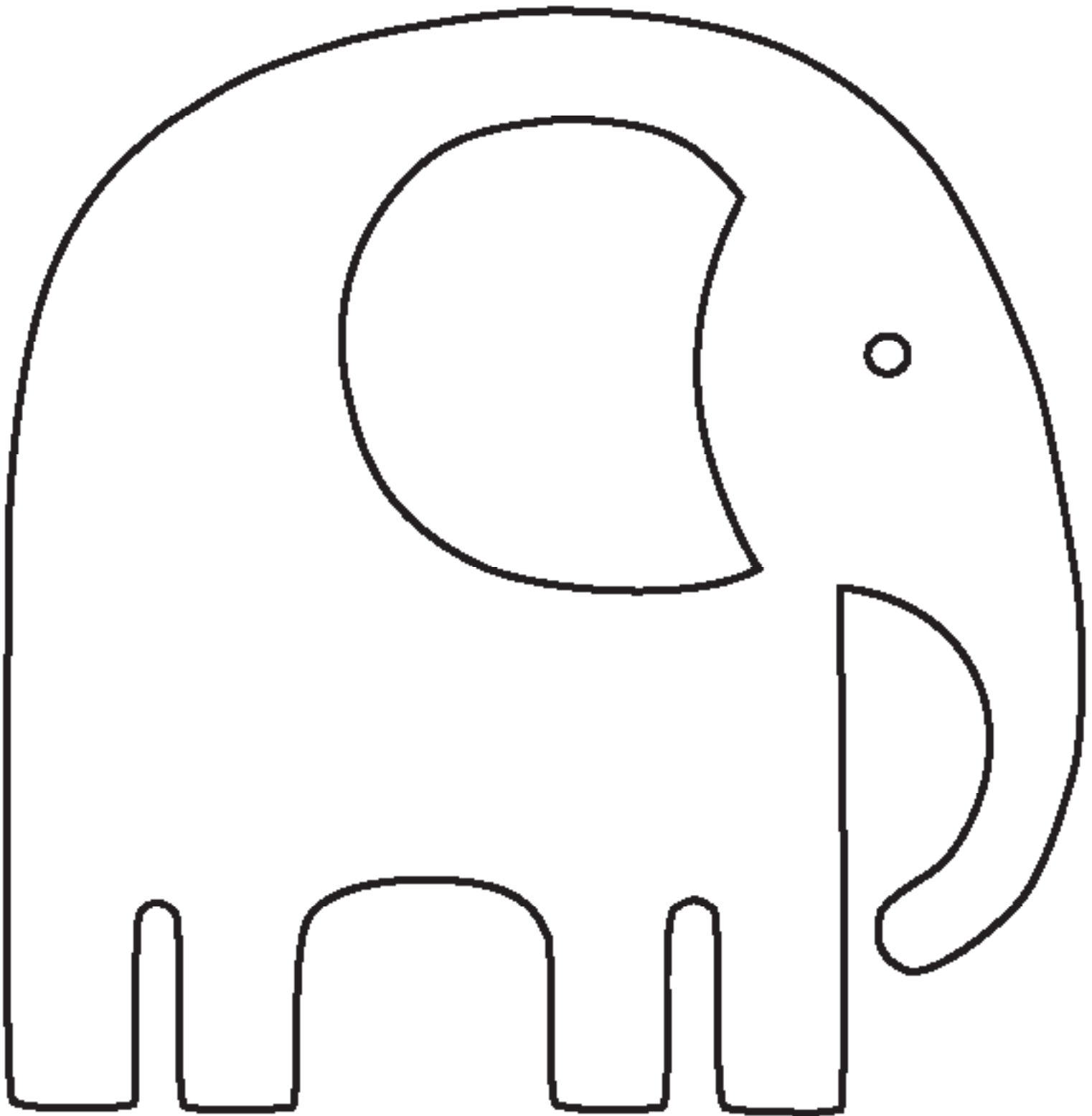
Assembly

1. Lay out the blocks in order and sew the rows together. Press the seams.
2. Next sew the rows together matching the seams between the blocks. Press seams.
3. Sew a 36½" red Inner Border strip to the left and right sides of the top. Press the seams under the red border.
4. Sew a 38½" red Inner Border to the top and bottom of the top. Press the seams under the red border.
5. Sew a 2¾" Corner Post to each end of two of the 2¾" wide Outer Border strips. Press the seam under the posts.
6. **NB** Remember that the elephant Outer Borders are directional - check which way you want the elephants to face.
7. Sew the two 38½" Outer border strips to the left and right sides of the top. Press the seams under the red border.
8. Now sew the two remaining Outer Border strips with the Corner Posts to the top and bottom of the quilt top. Press the seams under the red border.
9. Lay out the backing fabric wrong side facing up on a large flat surface.
10. Lay the wadding over the backing and smooth out any wrinkles.
11. Place the quilt top over the wadding. Make sure the backing and top are lined up and the backing fabric extends beyond the edges of the top.
12. Use your favourite method of securing the layers together: basting, pinning or spray basting.
13. Quilt by hand or machine.
14. Trim the excess wadding and backing back to the edge of the quilt top.
15. Join the five binding strips together using mitred seams. Press the long strip in half along the length of the binding to create a double binding.
16. Sew on the binding using a ¼" seam.
17. Turn to the back and hand stitch in place.

Remember to label your quilt with the important details of your name, the date and the occasion.

Congratulations on your quilt!

JUNGLE ELEPHANT TEMPLATE



Template for elephants and ears

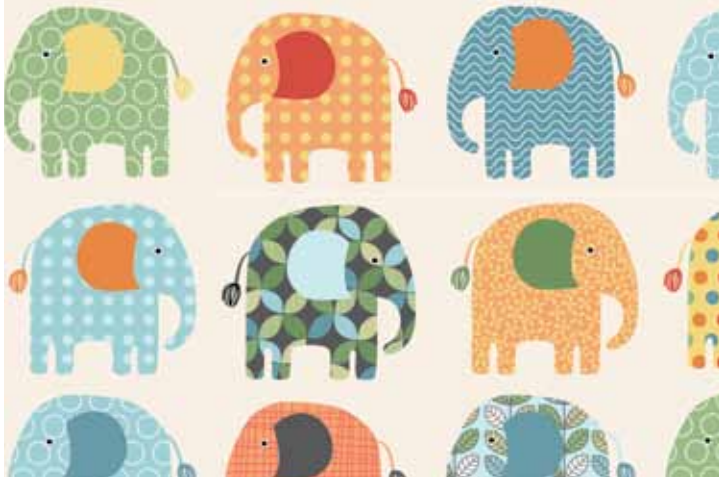
(No seam allowances)

JUNGLE

from makoweruk +44(0)1491 579727 www.makoweruk.com

makower uk

The Henley Studio



1203/1 ELEPHANTS



1201/1 SCENIC



1206/B BIRDS ON A CLOUD



1206/Q BIRDS ON A CLOUD



1204/B BIRDS



1204/R BIRDS



1205/Q NOISES



1205/X NOISES



1207/R SCATTER



1207/B SCATTER



1202/1 ANIMALS



JUNGLE by HILARY GOODING

FINISHED SIZE APPROX 42" x 42" (107 x 107cms)

FULL INSTRUCTIONS AVAILABLE TO DOWNLOAD

www.makoweruk.com

All images 50% of actual size.