

Downton Abbey®

FABRICS BY KATHY HALL



Edith's Grand Entrance
Quilt Design: **Tiffany Hayes**

Quilt Size: 72" x 96"

www.makoweruk.com

About Downton Abbey®

In addition to the women's fabric collections, we've also included four additional patterns that are unmistakably Downton. Each companion print is colored to complement and tie together the women's collections, and sets the scene for each character, just as Downton Abbey does.

Downton™ and Downton Abbey®. ©2013
Carnival Film & Television Limited. All Rights Reserved.

andover



makower uk
The Henley Studio

Free Pattern Download Available

www.makoweruk.com

Edith's Grand Entrance



Introducing Andover Fabrics new collection:

Downton Abbey®

Quilt design by Tiffany Hayes • <http://www.needleinahayesstack.biz>

Quilt finishes 72" x 96"

Block size: 12" square

Cutting Directions

Note: Read assembly directions before cutting patches. All measurements are cut sizes and include 1/4" seam allowances. WOF designates the width of fabric from selvedge to selvedge (approximately 42" wide).

Fabric A Cut (4) side borders 2 1/2" x 84 1/2"
Cut (4) top/bottom borders 2 1/2" x 72 1/2"
Cut (51) rail fence strips 2 1/2" x 12 1/2"

Fabric B Cut (2) side borders 2 1/2" x 84 1/2"
Cut (2) top/bottom borders 2 1/2" x 72 1/2"
Cut (51) rail fence strips 2 1/2" x 12 1/2"
Cut (54) squares 5 1/4", cut in half diagonally twice

Fabric C Cut (3) 13 1/4" squares, cut in half diagonally twice
Cut (9) 5 1/4" squares, cut in half diagonally twice

Fabric D Cut (3) 13 1/4" squares, cut in half diagonally twice
Cut (9) 5 1/4" squares, cut in half diagonally twice
Cut (9) strips 2 1/2" x WOF for binding

Fabric E Cut (2) 13 1/4" squares, cut in half diagonally twice
Cut (5) 5 1/4" squares, cut in half diagonally twice

Fabric F Cut (2) 13 1/4" squares, cut in half diagonally twice
Cut (5) 5 1/4" squares, cut in half diagonally twice

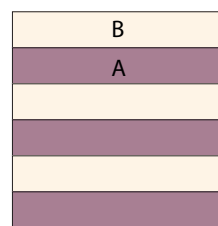
Backing Cut yardage in half, piece to fit quilt top with overlap on all sides

Fabric Requirements

		Yardage	Fabric
Fabric A	squares	2. 1/3 m	7390-P
Fabric B	squares	3. m	7330-OGL
Fabric C	squares	1/7 cm ^{5/8}	7327-O
Fabric D	squares, binding	1.40m	7327-B
Fabric E	squares	1/6 cm ^{5/8}	7328-OG
Fabric F	squares	1/6 cm ^{5/8}	7328-B
Backing		5.50m	7329-O

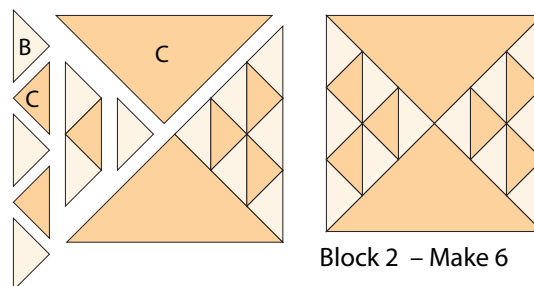
Making the Quilt

- Combine 3 Fabric A and 3 Fabric B strips as shown. Make 17 Block 1 Rail Fence blocks.

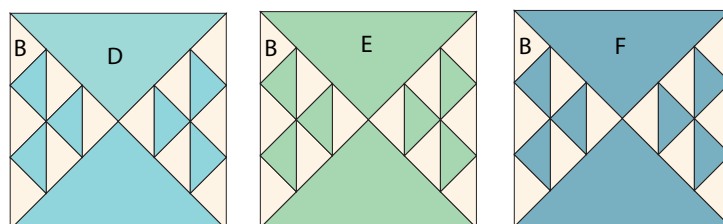


Block 1 – Make 17

- Combine 3 Fabric C triangles and 6 Fabric B triangles to make 2 pieced triangle units. Sew B/C triangle units to large Fabric C triangles to make block halves. Join the 2 halves to make a block. Make the number of blocks shown using Fabrics D/B, E/B, and F/B.



Block 2 – Make 6



Block 3 – Make 6

Block 4 – Make 3

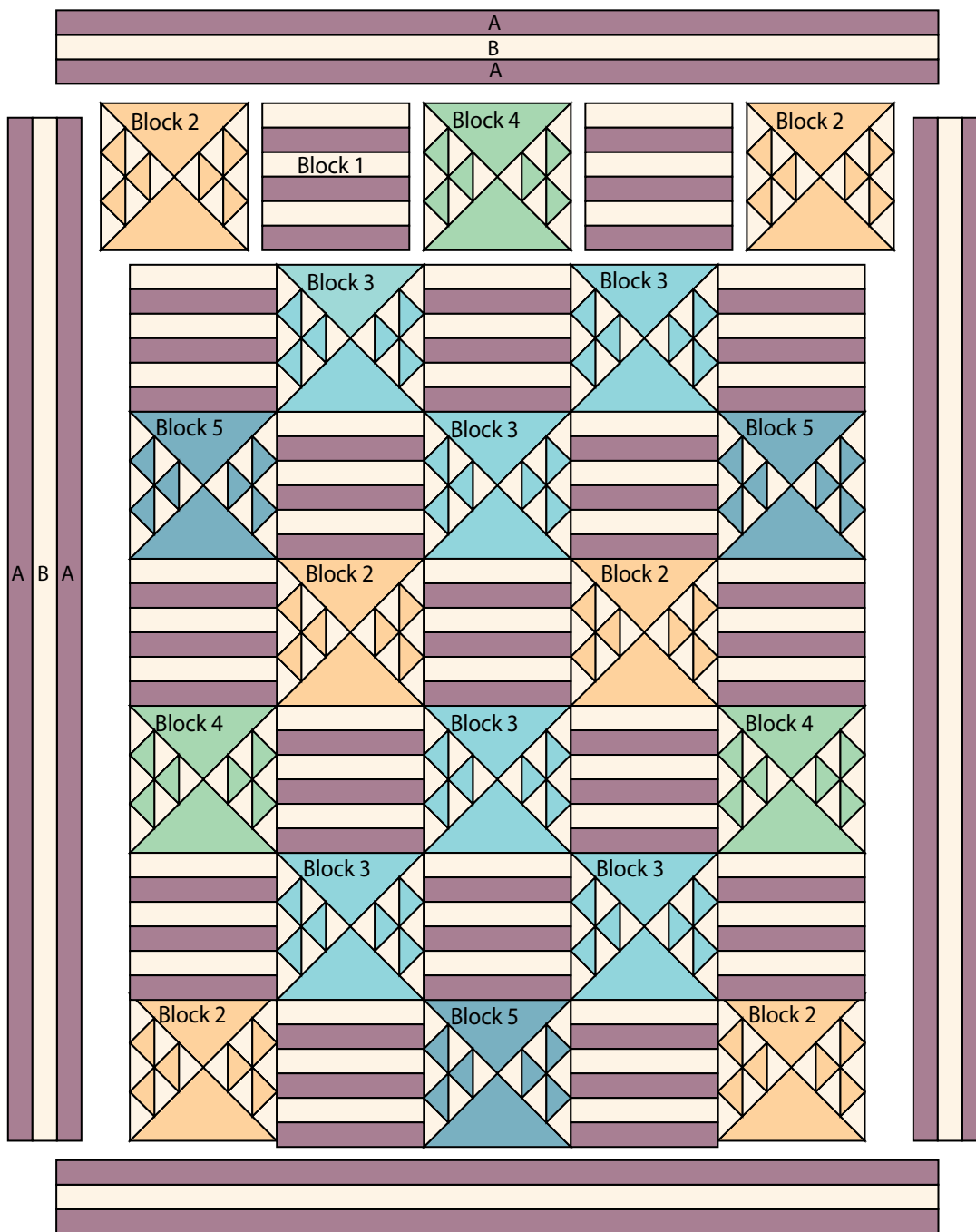
Block 5 – Make 3

Edith's Grand Entrance Quilt

3. Refer to Quilt Assembly Diagram for placement of blocks and sew together into rows as shown.
4. Sew two $2\frac{1}{2}$ " x $84\frac{1}{2}$ " Fabric A border strips to opposite sides of a $2\frac{1}{2}$ " x $84\frac{1}{2}$ " Fabric B border strip. Repeat. Sew borders to the sides of the quilt.
5. Sew two $2\frac{1}{2}$ " x $72\frac{1}{2}$ " Fabric A border strips to opposite sides of a $2\frac{1}{2}$ " x $72\frac{1}{2}$ " Fabric B border strip. Repeat. Sew borders to top and bottom of the quilt.

Finishing the Quilt

6. Layer the quilt with batting and backing and baste. Quilt as desired. Bind to finish the quilt.



Quilt Assembly Diagram



7319 K



7332 K



7320 K



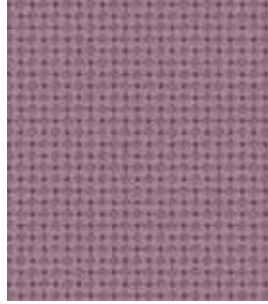
7318 K



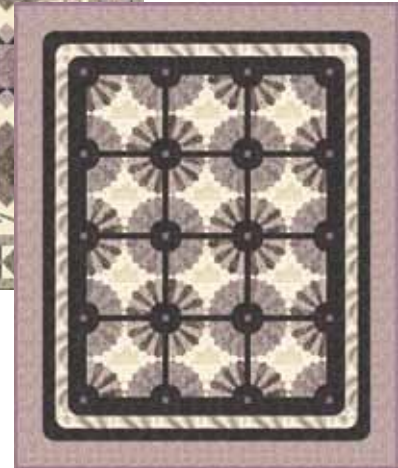
THE DOWAGER



7331 PK



7390 P



7318 P



7319 P



7320 P

Download free quilt patterns www.makoweruk.com



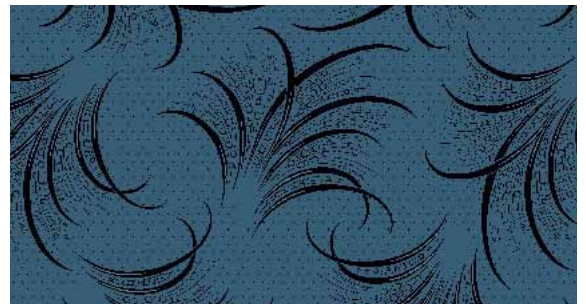
7321 R



7323 RB



7330 GK



7322 B



LADY MARY



7331 RG



7390 RB



7321 G



7323 GN



7322 R



Download free quilt patterns www.makoweruk.com

