

# Folk Friends Cushions

16" square / 40cm square

Designed by Lynne Goldsworthy of [lilysquilts.blogspot.com](http://lilysquilts.blogspot.com)



## Fabric requirements to make one cushion

Description	Cushion A	Cushion B	Amount	Cut
Front	2308X	2308Q	50cm ½ yard	One 16 ½" square
Binding	2307Q	2307X	FQ	Four 2 ½" WOFQ strips
Cushion back*	2300X or 2303X	2300Q or 2303X	75cm / ¾ yd	Cushion backs (two 10" x 20" cut portrait style)
Wadding	One 50cm / 20" square 279 Cotton Mix 80-20 from <a href="http://www.vlieseline.com/en">http://www.vlieseline.com/en</a>			
Thread	Aurifil 50wt for piecing and 40wt for quilting from <a href="http://www.aurifil.com">http://www.aurifil.com</a>			

\* We do not add a backing to our pillow front but, if you prefer to add a fabric backing, you will need a 20" square of some scrap fabric.

## Notes:

- Make sure to visit <http://www.makoweruk.com/projects/> to ensure you are working from the most up-to-date version of the pattern
- Panels are printed onto cotton and there is inevitably some minor degree of distortion. Always cut panels to the printed line, not the grain. Although this may involve cutting slightly wonky lines at times, the design will be pulled straight by the piecing around it. Patterns using panel pieces will also generally also include directions to add sashing and/or trim to size to accommodate the fact that there may be some size inconsistencies due to printing process.
- Read the pattern in full before starting
- ¼" seams are used throughout except where stated otherwise
- Press after each seam, pressing seams open or to one side as preferred
- WOF - width of fabric - a strip of fabric cut from selvedge to selvedge
- WOFQ - width of fat quarter - a strip of fabric cut from selvedge to centre cut from a FQ

## Making the cushion

1. Sew the binding strips end to end using diagonal or straight seams as preferred and press wrong sides together along the length to make a double fold binding.
2. Make a quilt sandwich, basting together the back (if you are using a back), the wadding and the top.
3. Quilt as desired then trim square, removing excess wadding and backing.
4. Hem one vertical edge of each of the backing pieces – hem the right side one and the left side of the other where directional fabric is used.
5. Overlap one backing piece over the other, pin to the cushion front, wrong sides together, zigzag around the four edges to secure and trim away excess backing fabric.
6. Bind, taking care to mitre the corners.



# Folk Friends



2300/X Animals



2300/Q Animals



2301/X Mosaic



2304/R Sprig



2304/T Sprig



2301/Q Mosaic



2305/T Trees



2305/Y Trees



2306/T Scallop Stripe



2303/X Paisley



2303/Q Paisley



2306/Q Scallop Stripe



2302/X Floral



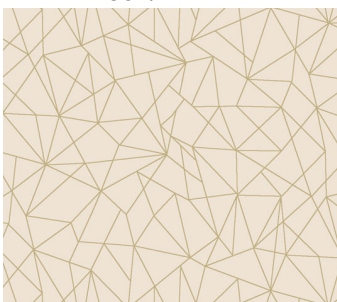
2302/T Floral



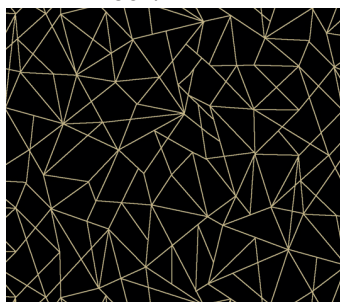
2308/X Panel  
each panel 60 x 112cms (24" x 44")



2308/Q Panel  
each panel 60 x 112cms (24" x 44")



2307/Q Linework



2307/X Linework