



Paper Pieces

Precut Paper Shapes
for English Paper Piecing



Paper Pieces 1-800-337-1537 *US ONLY*
P.O. Box 68 1-815-899-0925
Sycamore, IL 60178 1-815-899-2900 *Fax or Direct Line*

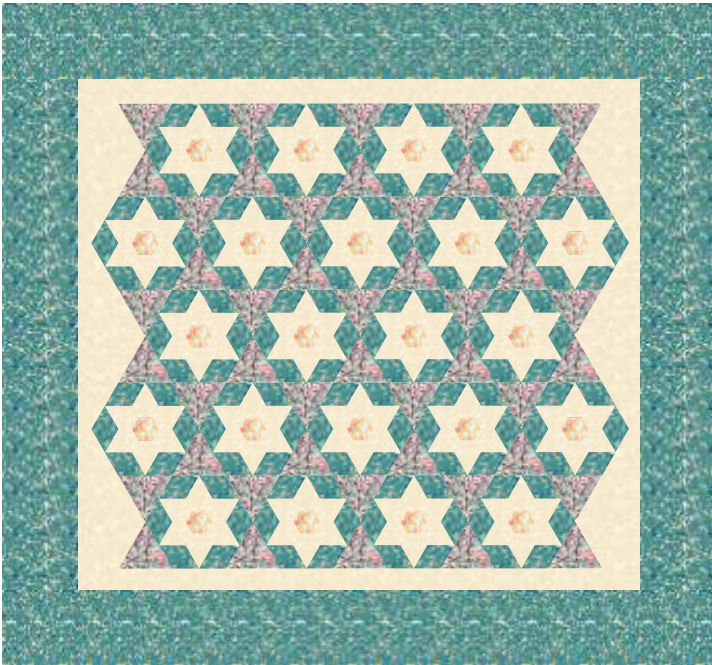
Visit us on the web at www.PaperPieces.com

Starlight Quilt

Free Pattern

Approximately 46-1/2" x 51-1/2"

Please read ALL instructions BEFORE beginning your quilt 😊



Variation 01 Colors Used

Hexagons: Edith's Patchwork 7329-O

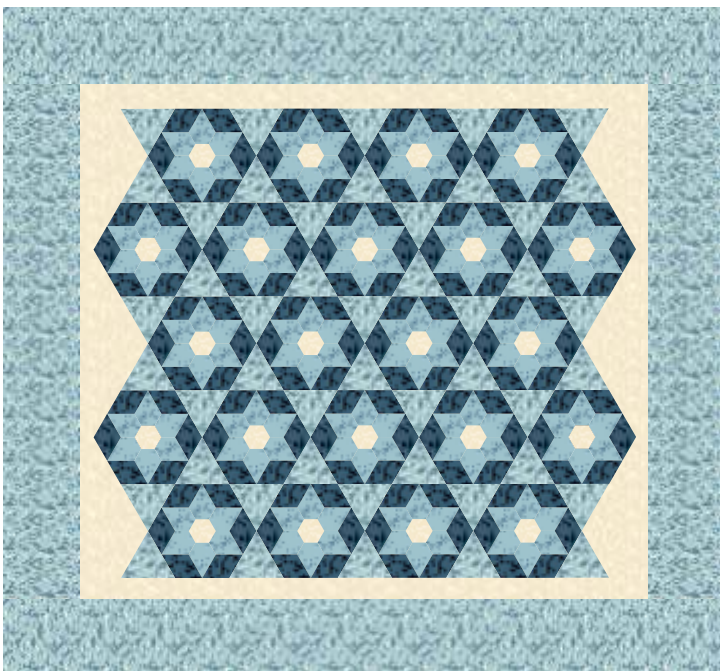
Triangles: Edith's Cameo 7328-B

Jewels: The Downton Flourish 7330-OGL

Diamonds: Sybil's Tapestry 7325-ET

Inner Border: The Downton Flourish 7330-OGL

Outer Border: Sybil's Tapestry 7325-ET



Variation 02 Colors Used

Hexagons: The Downton Flourish 7330-OGL

Triangles: Edith's Swirl 7327-B

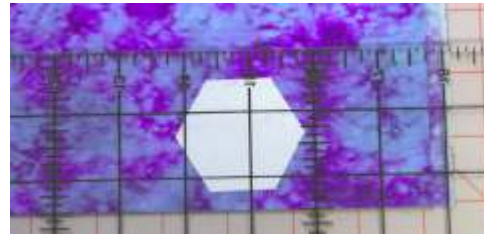
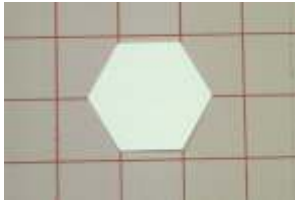
Jewels: The Downton Feather 7332-B

Diamonds: Mary's Plume 7322-B

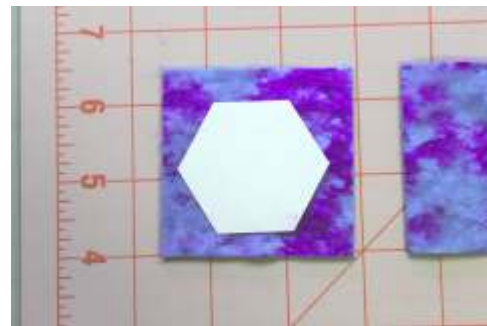
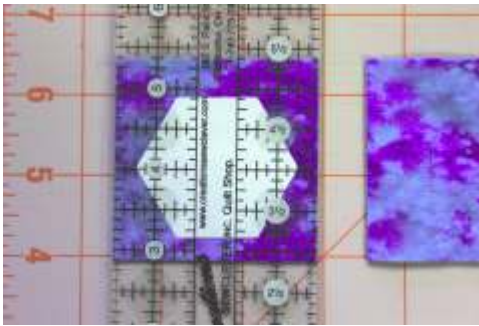
Inner Border: The Downton Flourish 7330-OGL

Outer Border: Edith's Swirl 7327-B

Cutting For Hexagons



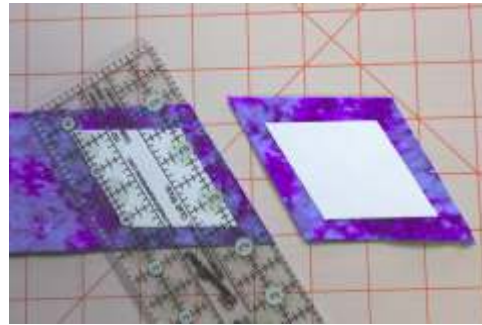
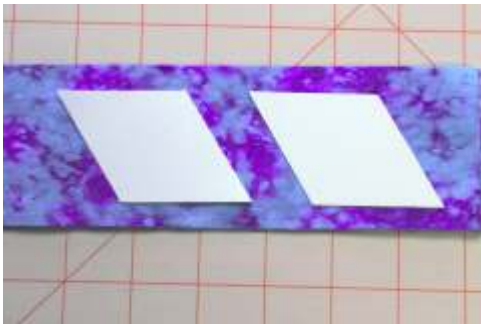
1) Place your hexagon on the cutting mat to see what size strip you need to cut. In this case, a 1" hexagon will take a 2-1/2" strip.



2) Sub cut the 2-1/2" strips into 2-1/2" Squares. The ONLY time we cut fabric hexagons instead of squares is for fussy cutting.

Cutting For Diamonds

1) Cut the strips for your diamonds as described on page for hexagons. Place your diamond on the cutting mat and allow 1/4" to 1/2" from the top and bottom of the piece.



2) After cutting the strips, use the 60 degree angle for 6 point diamonds on your ruler and sub cut the strips into diamond shapes.

Cutting For Triangles

1) Cut the strips for your triangles the same way you do for hexagons. Place your triangle on the cutting mat and give yourself 1/4" to 1/2" from the top and bottom of the piece.



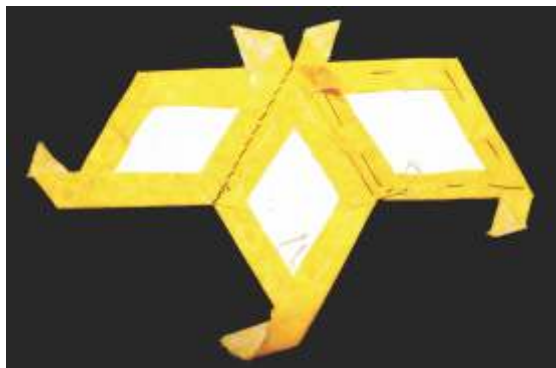
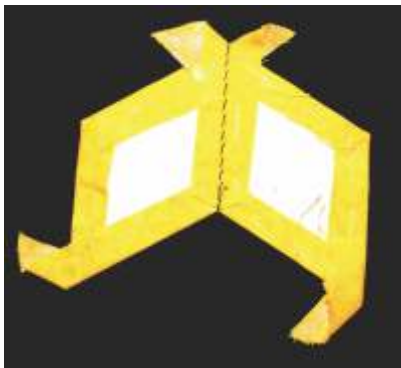
2) After cutting the strips, use the 60 degree angle on your ruler and sub cut the strips into triangle shapes.

Whip Stitching Straight Edges

After you have a number of pieces basted you can start whipping them together. With a matching thread, bury the knot between the paper piece and the seam allowance. If sewing a dark and light colored piece together, match the thread to the darker color.



Take two anchoring stitches when starting and whip stitch until you reach the next corner. Do not sew through the paper when joining the pieces. Your needle should slide next to the paper between the edge of the paper piece and the fabric, just catching the edge of the fabric.



We recommend about 6-10 stitches per inch. When you reach the “corner”, secure it by taking two stitches together. If your whip stitches are showing on the right side of the fabric, tighten the stitch slightly and catch less fabric. The stitching should be taut and even, but not pulling. Continue whipping pieces together to finish the block.

Removing the Papers

You can remove the papers once a piece is surrounded on all sides. Carefully pull the basting threads and remove the papers from the back side. These papers can be used again.

For the outer edges, press carefully while the papers are still in. This will help the fabric keep the shape of the paper piece. Once all of the edges are pressed, gently pull out the basting stitches and remove the papers from the back side keeping the shape with the seam allowance folded under. It is a good idea to run a basting stitch along the edge to keep the seam allowance folded under.

Appliquing Quilt Tops To A Background

After you have finished the quilt top, appliqu  it onto the background fabric. We recommend buying extra wide fabric or piecing the background fabric together to reach the dimension stated in the pattern. This requires more fabric, however it is much easier to finish the quilt this way. To begin, first baste the quilt top onto the background fabric. This prevents slipping and bunching of the fabric when appliqu ing. After you baste the top down, appliqu  it down using a blind stitch.

Adding Borders

Cutting The Borders

Once your quilt top is squared off, measure the long side of your quilt. Add 4" to this number to get the total for your long borders. Cut two borders this size. Match the middles of the borders with the middle of the quilt top and pin borders in place. Sew them to your quilt top (Fig. 1). Repeat the process for the short borders. (Fig. 2). Once both sets of borders are attached, square off the corners and trim away any excess bulk from behind. (Fig. 3).

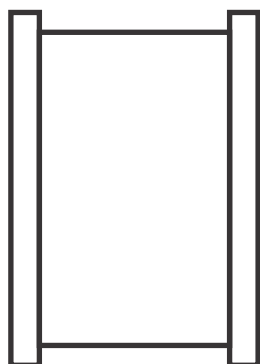


Fig. 1

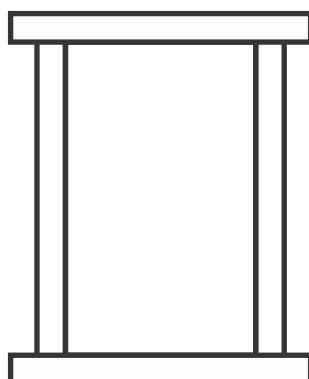


Fig. 2

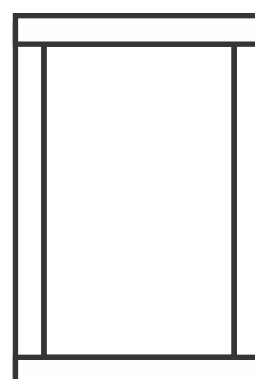


Fig. 3

Finishing

Once your quilt top has the borders attached, layer the top, batting, and backing. Quilt as desired. Finish by adding the binding.

Starlight Quilt

 - Read all instructions before beginning

Wall Hanging/ Lap Quilt

Quilt Size 46-1/2" x 51-1/2"

Paper Pieces Required

22 - 1" Hexagons (HEX100)
46 - 4" Triangles (TRI400)
132 - 1" Jewel (JWL100)
132 - 2" 6 Point Diamonds (6DIA200)

Fabric Required

Pieces

Hexagons: 1/8 yard or Scraps
Triangles: 5/8 yard
Jewels: 1 yard
Diamonds: 1 yard

Inner Border	2/3 yard
Outer Border	2/3 yard
Backing	50-1/2" x 55-1/2"
Batting	50-1/2" x 55-1/2"
Binding	3/8 yard

Cutting Instructions

Pieces ****Note:** A strip is considered the width of the fabric from selvage to selvage.

We recommend the following approach to cutting the fabric for the pieces if you are using scraps. Pin the paper piece to the fabric and roughly trim around it allowing for at least 1/4" seam allowance.

If cutting from strips:

Hexagons: Cut (2) 2-1/2" strips and then sub cut into (22) 2-1/2" squares

Triangles: Cut (4) 4-1/2" strips and then sub cut into (46) triangles

Jewels: Cut (13) 2-1/2" strips and then sub cut into (132) jewels

Diamonds: Cut (14) 2-1/2" strips and then sub cut into (132) diamonds.

Inner Border	Cut (2) 6" x 38" strips. Cut (2) 2" x 43" strips.
--------------	--

Outer Border	Cut (4) 5-1/2" strips.
--------------	------------------------

Binding	Cut (5) 2-1/2" strips.
---------	------------------------

Assembly Instructions

1) Baste the fabric to the Paper Pieces according to the basic instructions.

Hint for 6 Point Diamonds: When basting the 6 pointed diamonds, do not finish the points. Fold the seam allowance along one side and baste to the point. At the point, fold the opposite seam allowance over and baste it down. Leave the excess seam allowance at the point sticking out. When sewing the 6 pointed diamonds together, hold these small "tails" out of the way and stitch according to the instructions. These "tails" will spiral, on the wrong side, at the center of the star and the center point will have less bulk. **The same thing applies for the points of the Large Jewel.**

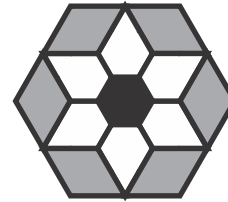
Assembly Instructions Continued

2) Sew 6 Large Jewels to one hexagon center to make a Large Jewel Flower.



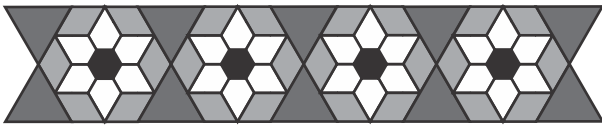
Make 22 Large Jewel Flowers

3) Sew six of the 6 Point Diamonds to the Large Jewel Flower to form a group.



Make 22 groups

4) Sew groups and triangles together to form the following rows.

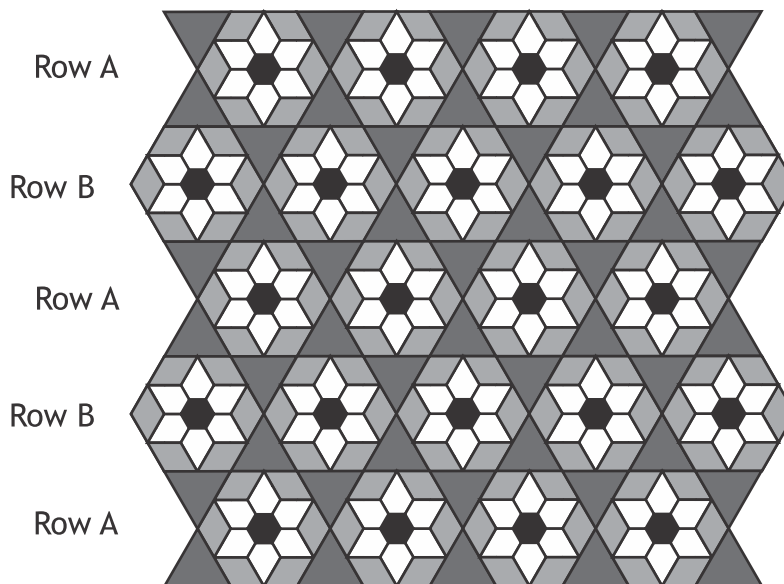


Row A
Make 3



Row B
Make 2

6) Once all five rows are completed, join rows A and B as shown below.



Assembly Instructions Continued

- 6) Applique quilt top to inner border strips. It is best to do the uneven sides first, then add the top and bottom borders.
- 7) Remove papers. See instructions on page 3.
- 8) With a rotary cutter square off top to 37" x 42".
- 9) Add borders. See instructions on page 4.
- 10) Layer finished top, batting and backing. Quilt as desired.
- 11) Bind and enjoy!

