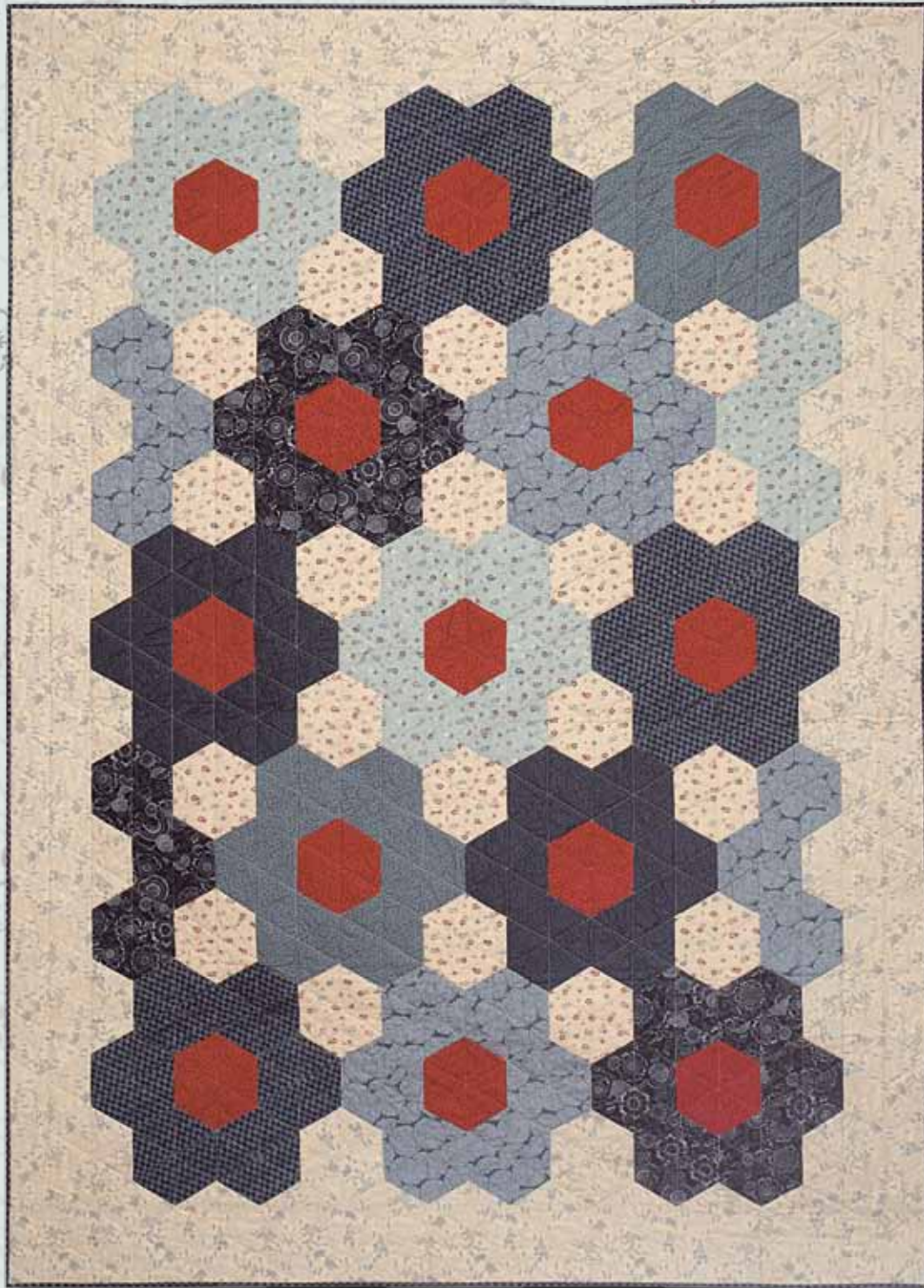


Sansui - Japanese Hexagon Quilt

Designed by Lynne Goldsworthy of lilysquilts.blogspot.com,
pattern drawn up in EQ by Jane Davidson.

Finished size of quilt 60" x 83" (152cms x 211cms)

Featuring the **Sansui** collection from **makoweruk**



makoweruk
The Henley Studio

118 Greys Road, Henley-on-Thames, Oxon RG9 1QW.
Tel: +44(0)1491 579727
e-mail info@makoweruk.com www.makoweruk.com

a andover

Sansui - Japanese Hexagon Quilt

Designed by Lynne Goldsworthy of lilysquilts.blogspot.com,
pattern drawn up in EQ by Jane Davidson.

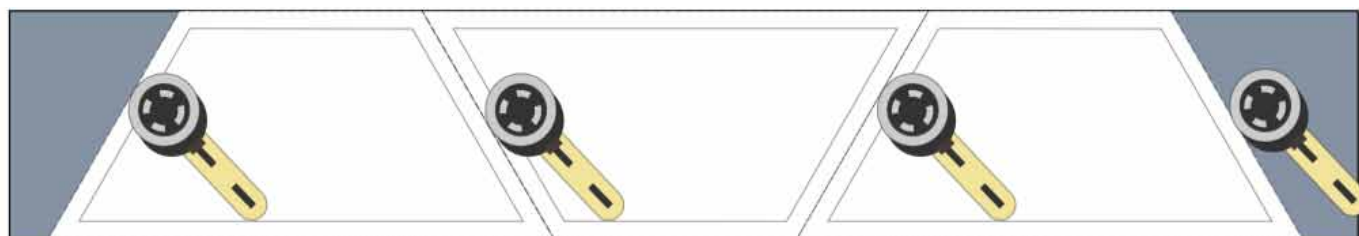
Finished size of quilt 60" x 83" (152cms x 211cms)

Featuring the **Sansui** collection from **makoweruk**

1. Cutting Instructions

| | | | |
|------------------------------------|----------|----|--|
| BLUE VERSION | | | 1.1 Cut the fabrics into 3¼" WOF strips as listed below. |
| 1226/B | FABRIC A | ½m | 5 strips (30 half hexagons) |
| 1225/B9 | FABRIC B | ¾m | 6 strips (36 half hexagons) |
| 1227/B4 | FABRIC C | ½m | 4 strips (24 half hexagons) |
| 1223/B | FABRIC D | ¾m | 6 strips (36 half hexagons) |
| 1221/B | FABRIC E | ½m | 5 strips (30 half hexagons) |
| 1227/B9 | FABRIC F | ½m | 4 strips (24 half hexagons) |
| 1227/R | FABRIC G | ½m | 4 strips (26 half hexagons) |
| 1222/Q | FABRIC H | 2m | 9 strips (58 half hexagons) |
| 1226/Q | FABRIC I | ¾m | 6 strips (40 half hexagons) |
| 1221/B | BACKING | 4m | |
| 1221/B | BINDING | ½m | |
| Wadding: 1,70m x 2,30m (68" x 91") | | | |

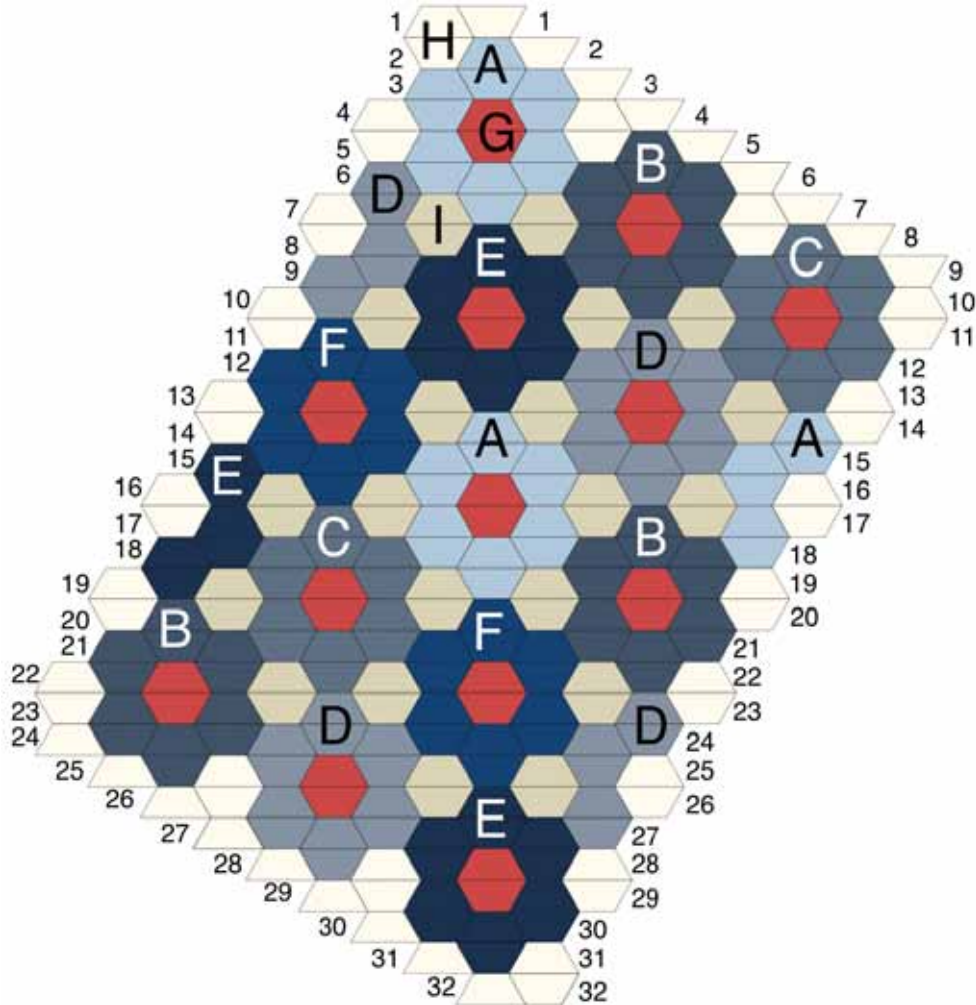
1.2 Using the template, cut six or seven half hexagons from each strip to yield the number of half hexagons listed in 1.1. When cutting the half hexagons, rotate the template as shown in the diagram below to maximize the number of half hexagons per strip.



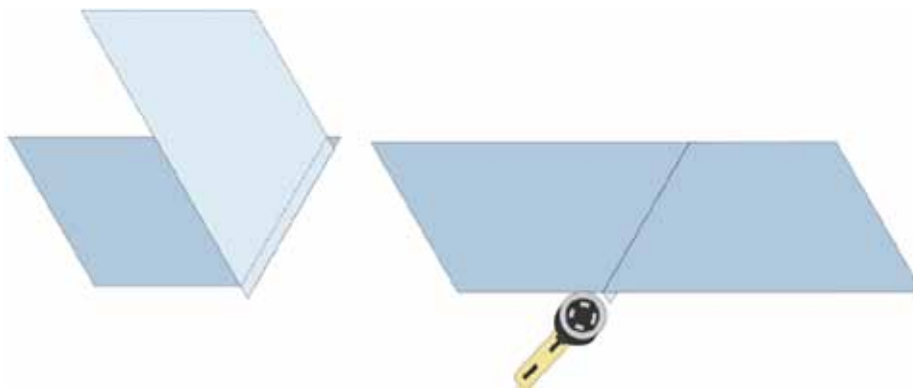
1.3 Cut the remainder of fabric H into three 5½" WOF strips and four 6" WOF strips. Sew the 5 ½" strips end to end and cut into two strips 60½" long. Sew the 6" strips end to end and cut into two strips 73½" long. These strips will be used to sash the quilt.

2. Making the quilt top

2.1 When making the quilt top, you will be sewing the half hexagons into 32 rows following the layout diagram. The numbering on either side of the diagram will help you to keep track of the rows. The lettering shows the fabrics to be used in each part of the quilt top.



2.2 The diagram below shows you how to sew the half hexagons together. The seams need to be slightly offset so that the edges of the fabrics meet on the $\frac{1}{4}$ " line. Once each seam is sewn, press to one side and trim the dog ear. Press seams in alternating directions in each row so that they will nest when sewn together.



2.3 Sew the rows together following the layout diagram. Press seams open or to one side as preferred.

2.4 When the rows are sewn together, trim the top and bottom $\frac{1}{4}$ " away from the points of the blue half hexagons. Then trim the sides by aligning the ruler with the edges of the blue half hexagons. The following three diagrams show this process in more detail.

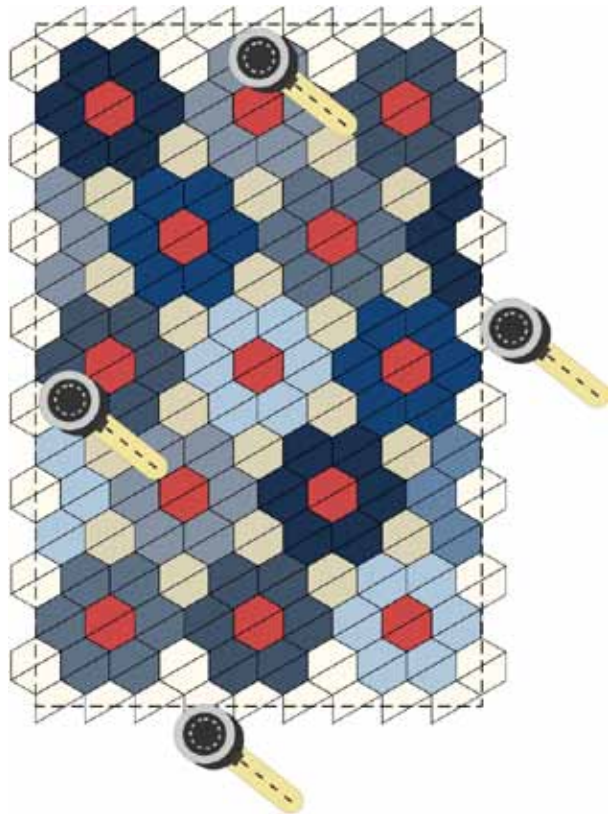


Diagram below shows close up of trimming top and bottom of the quilt

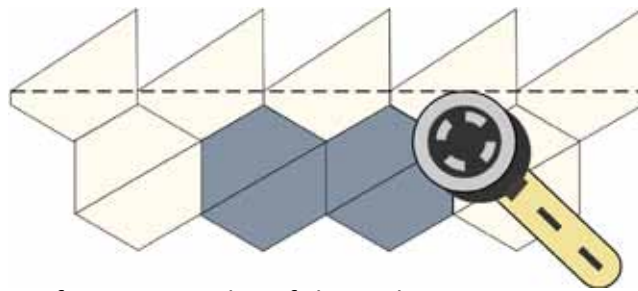
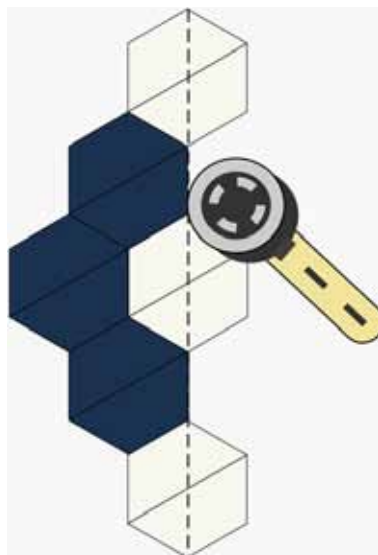
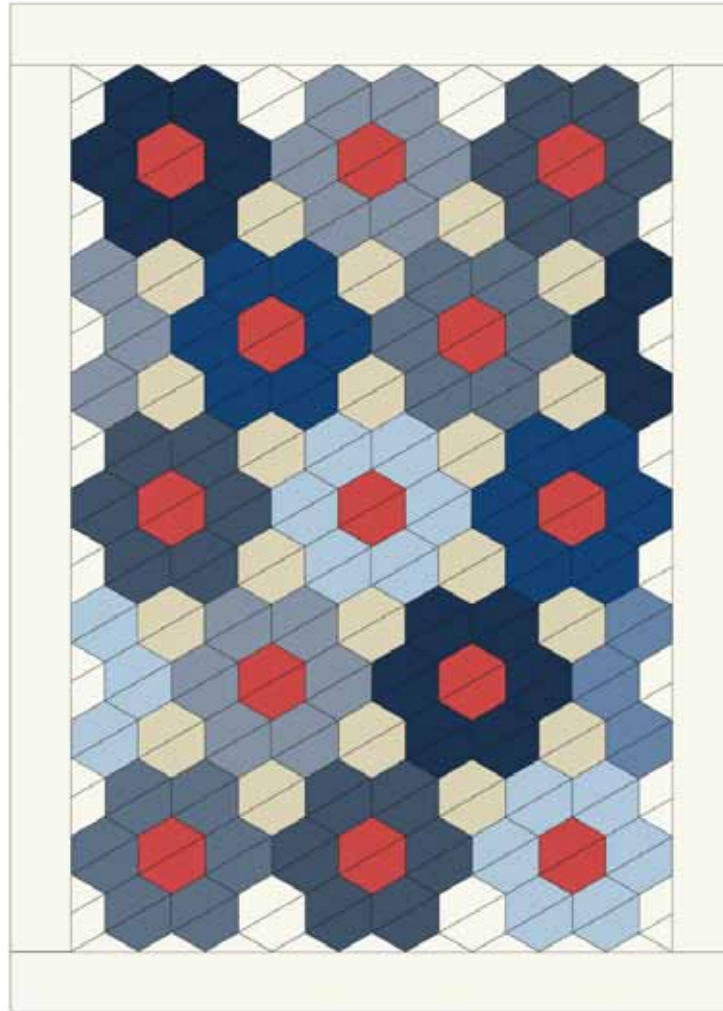


Diagram below shows close up of trimming sides of the quilt.



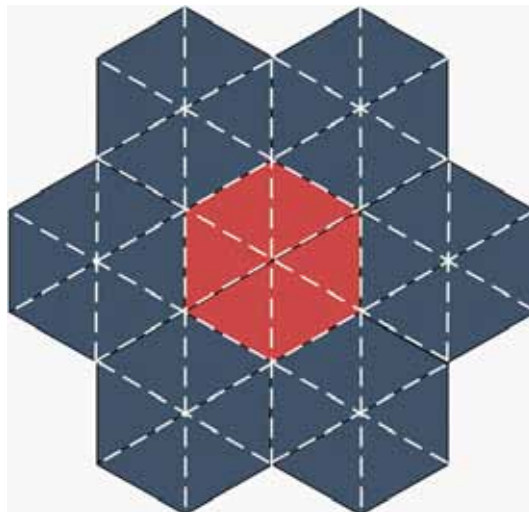
2.5 Sash the sides of the quilt top using the 73½" sashing strips. NB: the sashing will need to be pinned to the quilt top before sewing since the sides (and top and bottom) of the quilt top are all bias edges and therefore prone to stretching. Press seams towards the sashing.

2.6 Sash the top and bottom of the quilt top using the 60½" sashing strips, making sure to pin first. Press seams towards the sashing.



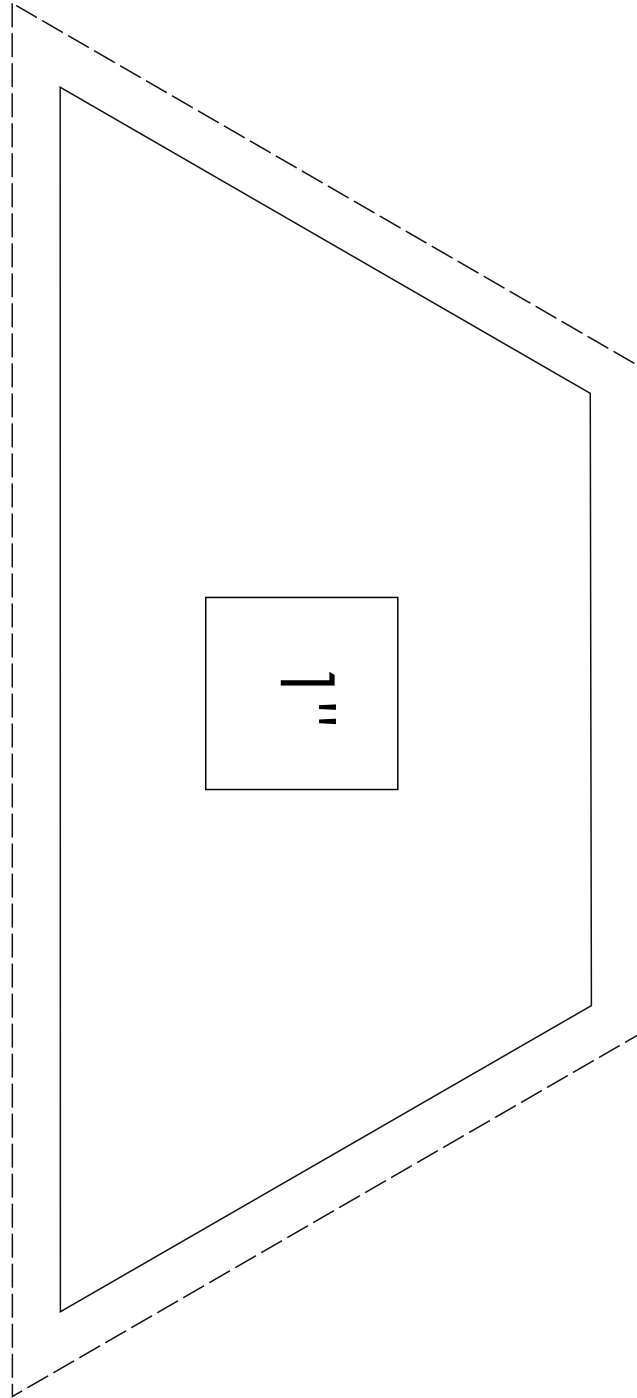
3.Finishing the quilt

- 3.1 Cut the backing fabric into two equal lengths and sew together end to end. Press seam open or to one side as preferred.
- 3.2 Make a quilt sandwich using the backing, wadding and quilt top.
- 3.3 Quilt as desired. I quilted using an Aurifil 50wt cream thread and stitched parallel to the sides of the hexagons so that each hexagon was split into six triangles (see diagram).



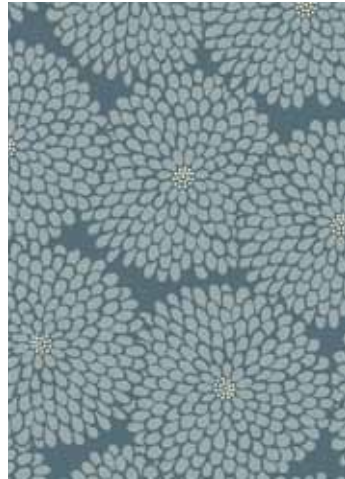
- 3.4 Cut the binding fabric into seven 2½" WOF strips to make the binding. Bind to finish the quilt, taking care to mitre the corners.

HEXAGON TEMPLATE





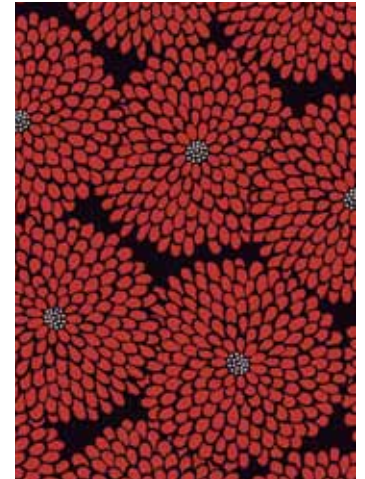
1221 B LARGE FLORAL



1223 B CHRYSANTHEMUM



1221 X LARGE FLORAL



1223 R CHRYSANTHEMUM



1225 B9 ARROW



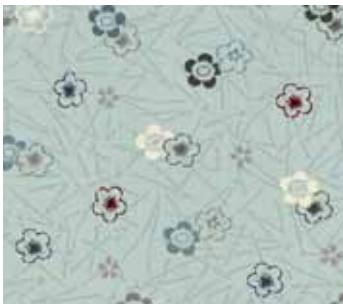
1222 Q STREAM



1225 X ARROW



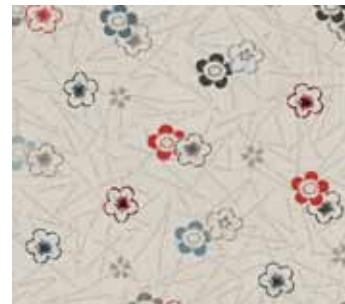
1222 S STREAM



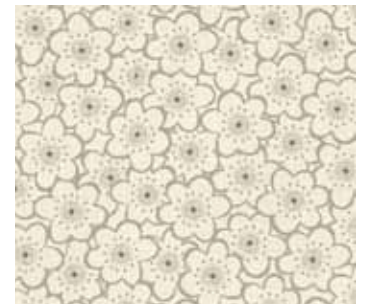
1226 B FLOWER SCATTER



1226 Q FLOWER SCATTER



1226 S FLOWER SCATTER



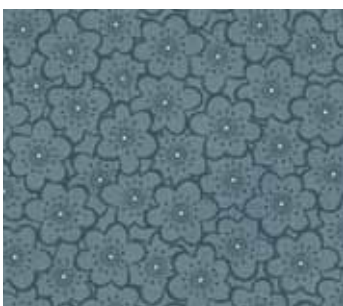
1227 S2 OUTLINE BLOSSOM



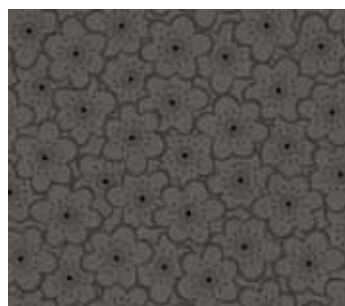
1227 B9 OUTLINE BLOSSOM



1227 R OUTLINE BLOSSOM



1227 B4 OUTLINE BLOSSOM



1227 S8 OUTLINE BLOSSOM



SANSUI QUILT by Lynne Goldsworthy of lilysquilts.blogspot.com

Finished size 1,52m x 2,11m (60" x 83")

Download free pattern from www.makoweruk.com

All images 50% of actual size.